

■ COMMIT TO SAFETY: DRIVE TO ZERO

At GreenWood, safety is a priority in everything we do and it is the common thread woven through all levels of management and project personnel. Ultimately, our goal is zero incidents which means everyone do their part to prevent injuries. To provide a visual for this ongoing commitment, our "Safety Ascension – Drive to Zero" illustration gives an instant view of our approach to work place safety. Each level within the illustration offers a purpose to reach our performance goals and commitment to continuous safety excellence.

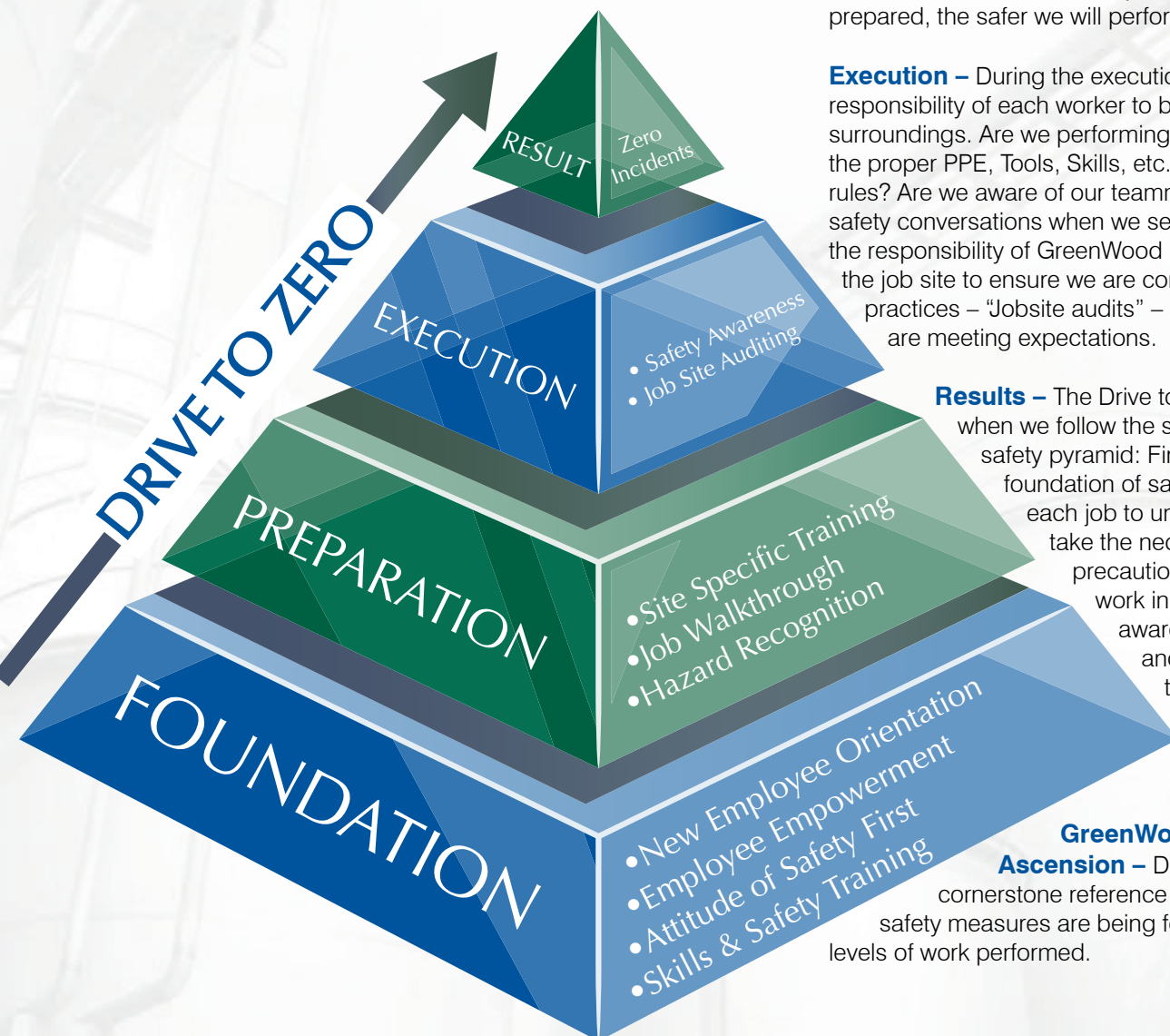
Foundation – It is the responsibility of GreenWood, our employees and our customers to promote a culture of safety. Doing so requires us to provide the proper tools, training and reinforcement to make safety a reality. By laying a solid foundation where we all understand that safety is our first priority, not just a slogan, we will be able to build an effective, team-based safety culture.

Preparation – Before work begins, we must properly prepare for each job by understanding the environment we are working in, understanding the job requirements (PPE, Training, Tools, etc) and understanding the hazards associated with the job. The better we are prepared, the safer we will perform.

Execution – During the execution of any task, it is the responsibility of each worker to be aware of their surroundings. Are we performing the task safely, with the proper PPE, Tools, Skills, etc.? Are we following the rules? Are we aware of our teammates? Are we having safety conversations when we see a risk? Secondly, it is the responsibility of GreenWood leadership to inspect the job site to ensure we are conforming to safe practices – "Jobsite audits" – and that our programs are meeting expectations.

Results – The Drive to Zero is fully possible when we follow the stages outlined in the safety pyramid: First create a solid foundation of safety first; Next, review each job to understand the risks and take the necessary, proper precautions; Then, execute our work in a safe manner and be aware of our teammates and surroundings at all times; Finally, inspect what we expect and the desired results will be attainable.

GreenWood's 'Safety Ascension – Drive to Zero' is our cornerstone reference tool to ensure proper safety measures are being followed through all levels of work performed.



■ ALWAYS AWARE

Our safety program is more than a statement or a philosophy. It's a mindset that involves every employee which is why we created the "I'm Always Aware" safety program.

We understand that safety success begins with our employees. By maintaining a constant focus on safety, then we perform every job safely. Employees are empowered with the responsibility to take necessary action whenever a safety situation occurs in order to act proactively and prevent issues from occurring.

We believe employees that think safe...are safe!

■ ZERO ACCIDENTS

Work performed by GreenWood, Inc. is conducted with an emphasis on safety in all areas. The prevention of incidents and injuries is an on-going mindset.

Every employee understands the critical importance of producing outstanding job results with zero incidents. We take pride to ensure our work environments are the safest they can be.

Training and education for personnel at all levels – from the office to the plant or facility – means we maintain a safety mindset in all behaviors. To you, that translates into confidently knowing GreenWood, Inc. is a dependable resource – meeting the highest safety standards.

"GreenWood puts into practice what they state in their operating principles. They work safely, hard and smart."

– Director of Maintenance & Safety,
Polyester Film Manufacturer



GreenWood, Inc. is a
Women-Owned business.

"I'm Always Aware"

Success
begins with
MY safety



GreenWood
PEOPLE | PERFORMANCE | RESULTS



GreenWood